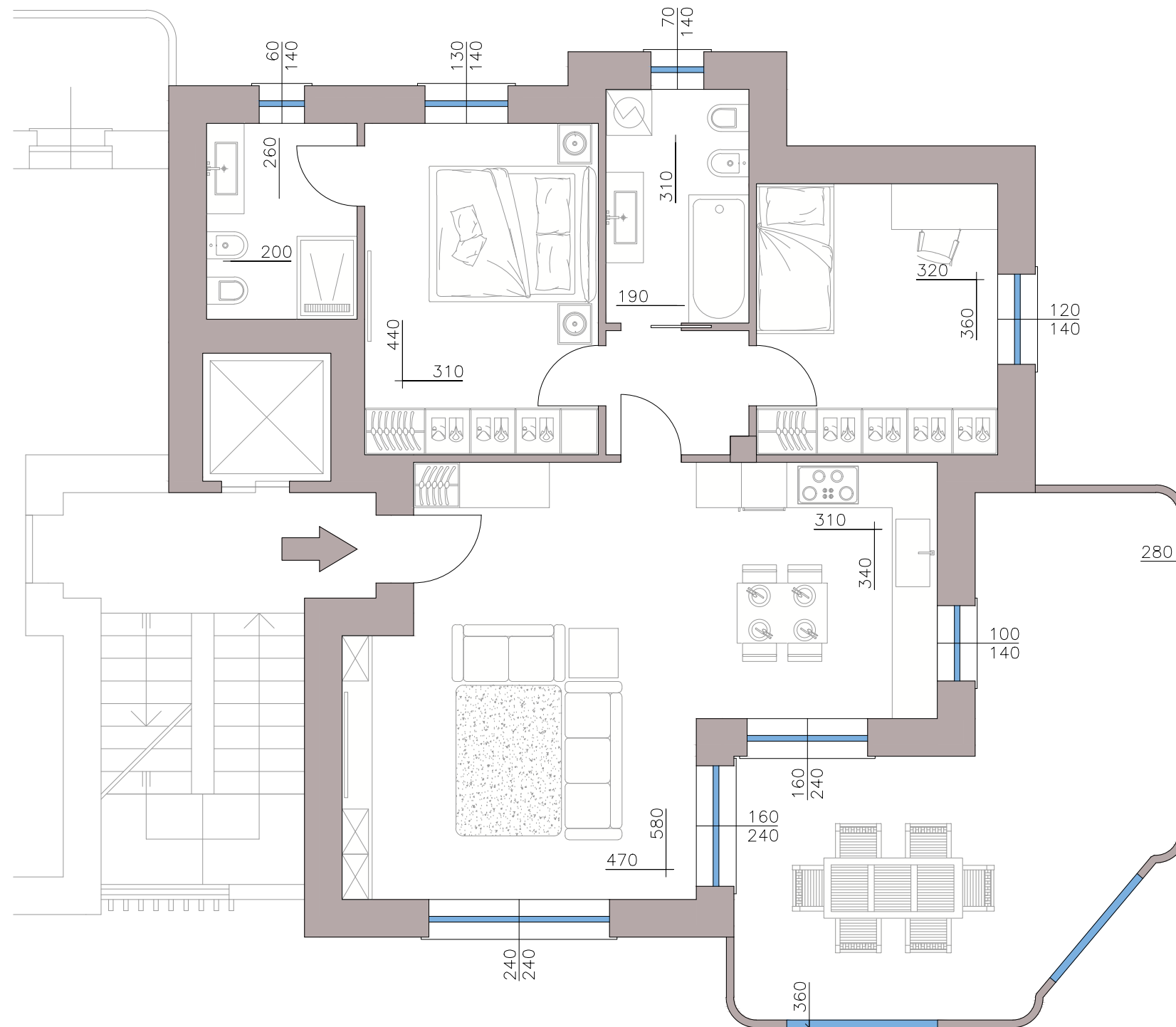




# TRILOCALE

planimetria arredata


NOTA: le riproduzioni grafiche e le quote riportate sono da ritenersi indicative passibile di modifiche in sede esecutiva e non costituiscono alcun elemento contrattuale né di misura.



 Appartamento mq 120,00

 Bagni 2

 Camere 2

 Terrazzo mq 27,00



PIANO QUARTO  
APPARTAMENTO B4

